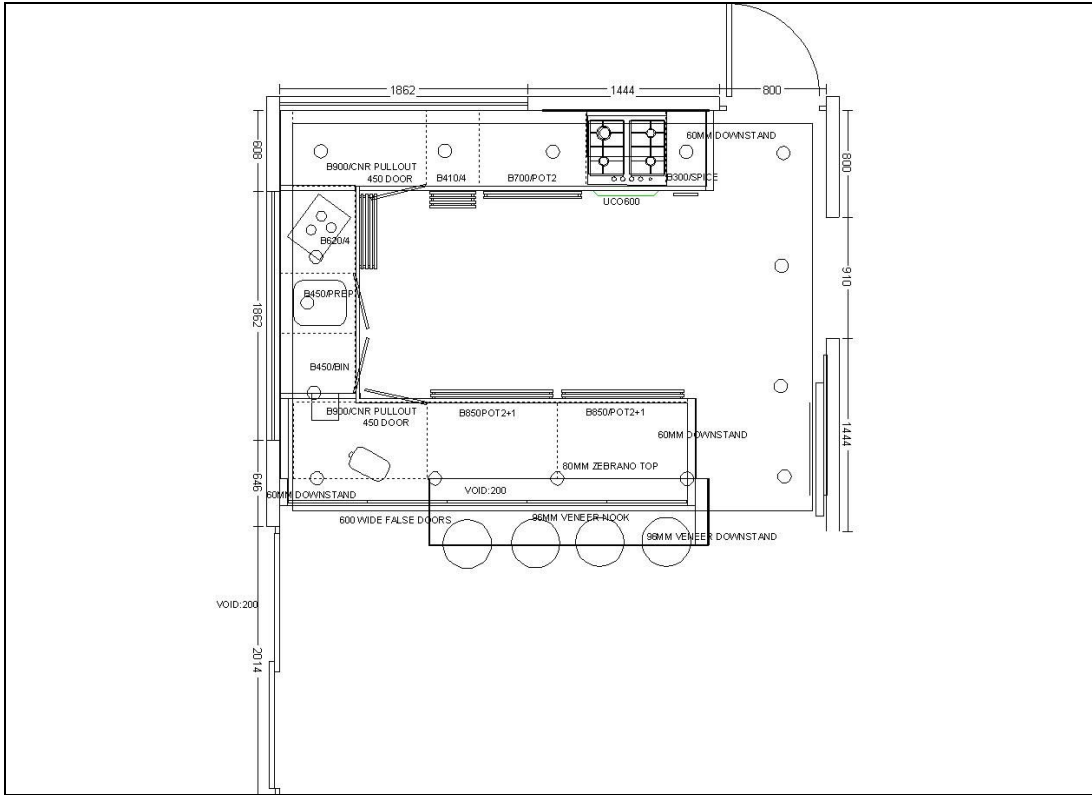




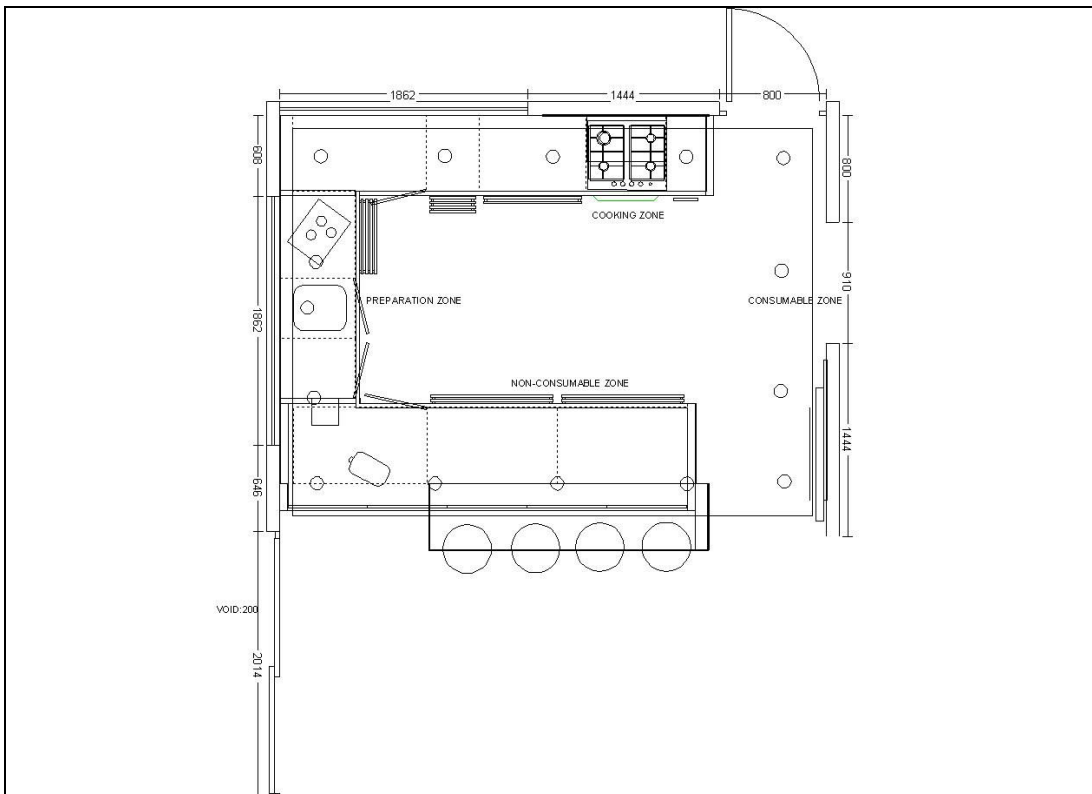
strong lines and graceful style fuse effortlessly in this living space. black gloss lacquered doors and thick caesarstone ash counters offer a neutral backdrop for the already calm space. zebrano timber and the rough stone cladding complement the sharpness of the design and the striking reflection of the black sprayed glass cladding behind the stove, showing that exact function and design does offer emotion and tranquility.

the design philosophy that we have adapted is called *relational living*, which simply means that the space is designed in a way where the experience of each person - performing a task or not - is enhanced and not hindered. the demands on the modern kitchen are high and therefore focus needs to be applied to zone planning, making sure that all the functional requirements of each zone in the kitchen has been met, enabling various tasks to be in motion simultaneously yet still keeping the workflow clean; see 'zone planning' floorplan. you will see that the final result is functional work zones, aesthetic beauty, timeless appeal and ultimately relational design that will integrate both visually and practically with the rest of the home

floor plans



zone plan



zone planning

preparation:

- kitchen utensils
- cutting boards
- pull-out bin
- vegetable storage

cooking:

- pans
- pots
- oven pans
- cooking utensils
- baking trays and racks
- baking forms and foils
- spices and bottles

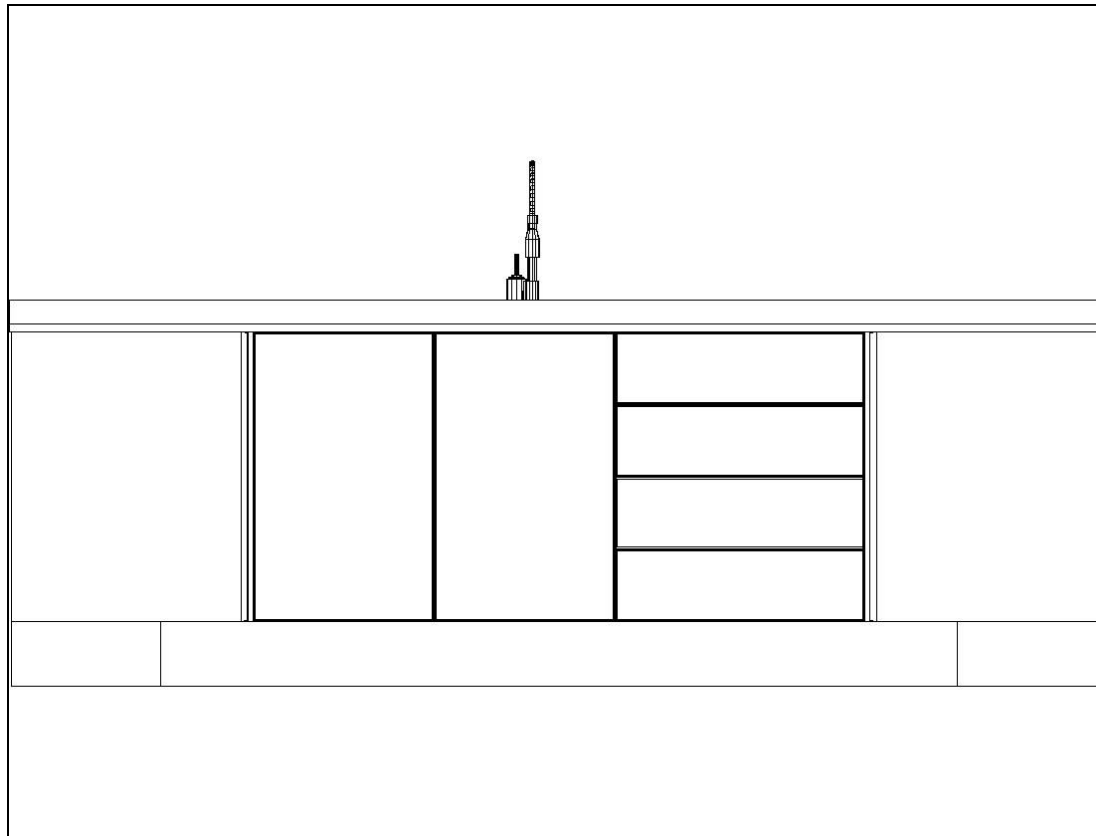
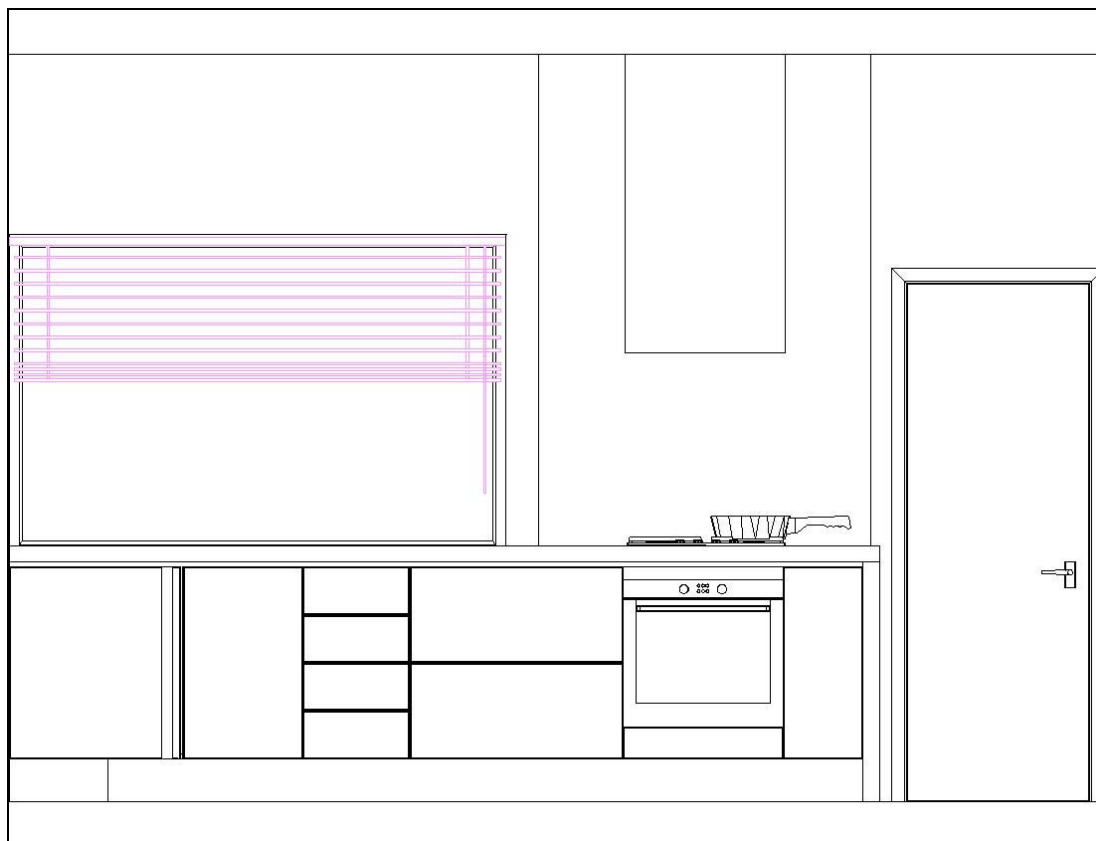
consumables:

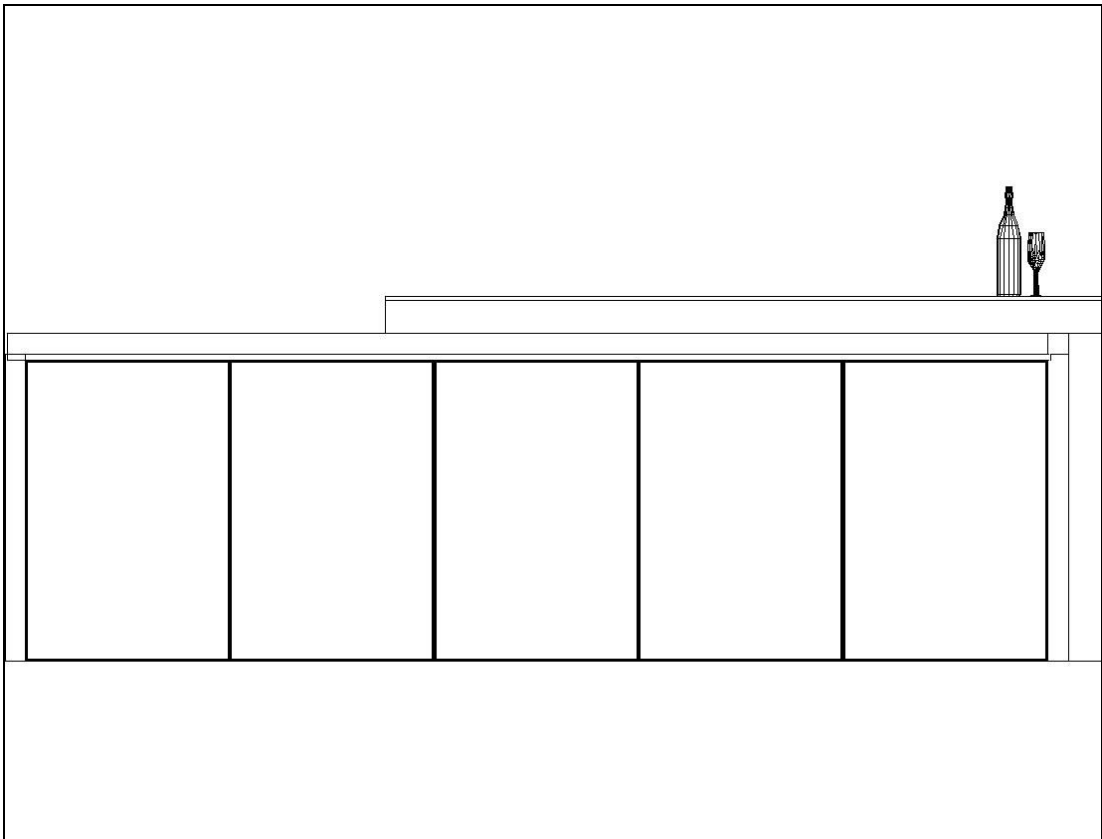
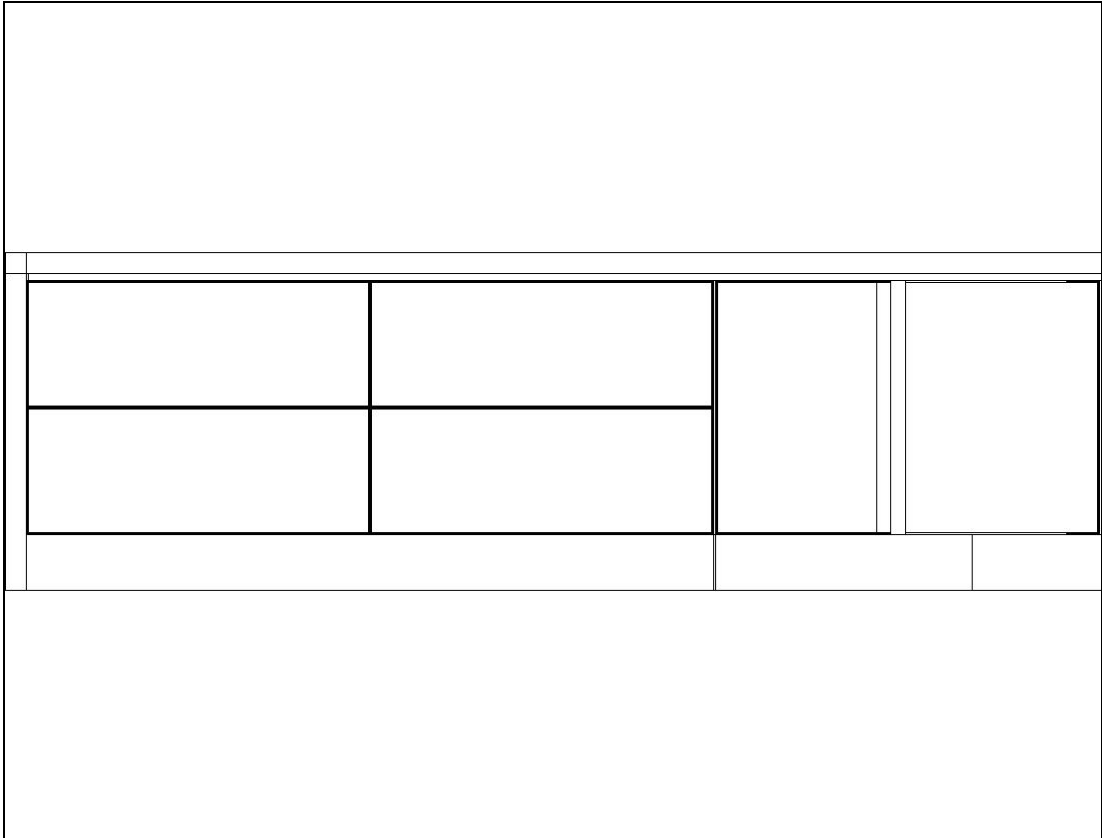
- bread
- coffee, tea
- cornflakes and muesli
- canned goods
- noodles, rice and side-dishes
- finished products
- sugar, flour and semolina
- chilled foodstuffs (in refrigerator and freezer)

non-consumables:

- cutlery
- dishes
- coffee dishes
- glasses and desserts bowls
- plastic containers
- odds and ends

elevations





3D colour images





colour photos



Philip Richards
philip@blu-line.co.za

Phone : 0860 548 464

Fax : +27 11 392 2502

Mobile : +27 82 595 1668

Web : <http://www.blu-line.co.za>

blu_line
living