



69 Serenade Road
Elandsfontein
Johannesburg
1401

T +27 011 822 1350
F +27 011 822 1701

www.caesarstone.com

Press Release

No stone left unturned in the 2nd CAESARSTONE DESIGN AWARD COMPETITION

The final set of entries showcased in Caesarstone's 2nd Design Award left no stone unturned, as students excelled in honing their acquired design skills to create a STONE HOUSE, briefed by Sonja Petrus Spamer. Caesarstone, leading quartz surface pioneers, announced the winner of STONE HOUSE on 6 August 2009 at Johannesburg's Hyatt Hotel.

A trophy, manufactured from CaesarStone, was presented to the winner, Franco Enrico student from the Tshwane University's Department of Architecture. Winning lecturer is Peet Wolmarans. The winner and the lecturer of the winning student will be winging their way to Israel, home of Caesarstone. The prize, handsomely valued at R42 000.00 each, includes airfare, accommodation and spending money.

The STONE HOUSE brief was conceptualized by Sonja Petrus Spamer of MMA Architects. As the original inventor and first global company to use natural quartz, Caesarstone's brief had to reflect the perfect harmony between sustainability and style. In addition it stimulated a conscious response towards the global initiative of environmental responsibility. In the brief, students were challenged to engage in an exacting process that both assimilates and activates the site. The brief did not dictate maximum or minimal usage of the CaesarStone product but asked students to create spatial and visual solutions by breaking preconceptions. The entries received from tertiary design institutions surpassed the judges' expectations and showcased true design talent.

ADDITIONAL INFORMATION:

PANEL OF JUDGES

JONATHAN ANSTEY

FARHAD AREFF

SONJA PETRUS SPAMER

JURI ABBOTT

STAUCH VORSTER ARCHITECTS

URBAN EDGE ARCHITECTS

MMA ARCHITECTS

URBAN EDGE ARCHITECTS

JUDGES' COMMENTS

JONATHAN ANSTEY OF STAUCH VORSTER ARCHITECTS **COMMENTS ON THE OVERALL ENTRIES:**

It is with great enthusiasm that we congratulate the entrants for the energy employed in realizing the vast array of architectural solutions. We were entranced by the level of thoughtfulness and quality of presentation across the board. Once again the students proved that great design results from bravery supported by huge commitment – WELL DONE!

SONJA PETRUS SPAMER OF MMA ARCHITECTS **COMMENTS ON THE WINNING ENTRY:**

This years winning entry celebrates the beauty of stone architecture and specifically the use of Caesarstone in the finest way I have seen to date. The concept celebrates the duality of permanence and security – rock and the transience and spiritual – air; steel; glass. The forces of the geologists complex connection to the earth, the city and the sky shaping space in an extraordinarily simple yet complex way. The bedroom is a glass and steel belvedere from where Siegfried can contemplate the sky, the city and nature at the same time. A place to contemplate and a place to dream. The rock hewn cave like spaces below houses the traditional program for the house, save the subterranean bathing area right down below in the belly of the earth. The cave made habitable and elegant for the lover of its rock treasure (the geologist) and his friends. The store is rough hewn, matt, to highly polished – wide selection of patterning and colour. Carved out of natural and manmade stone (Caesarstone) the house concretizes the wild and serene terrain of exploration geology and the elegant order of the city in eternal conflict. Yet the design brings serenity to this juxtaposition. For me the winning entry is the possibility of stone as space making and space defining element writ large and well.

The 2010 brief "An Icon to Earths Wellbeing" has been conceptualized by Juri Abbott of Urban Edge Architects.

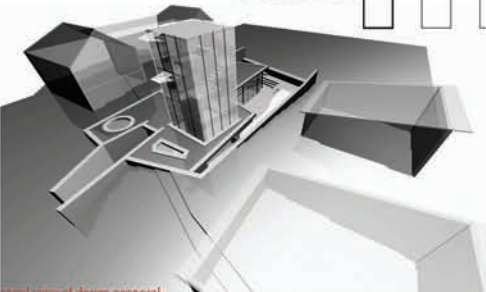
EDITORIAL CONTENT

Emporio Communications

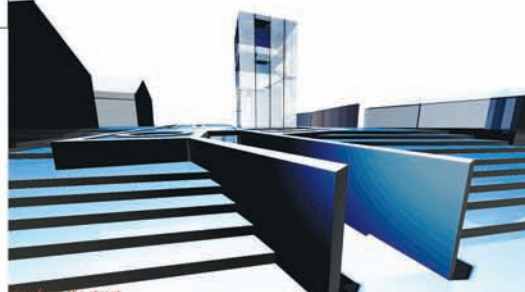
Philip Fouche

011 485-2680/1

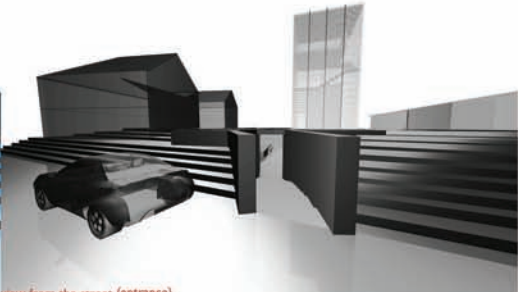
emporio@mweb.co.za



airial view of design proposal



view from the street



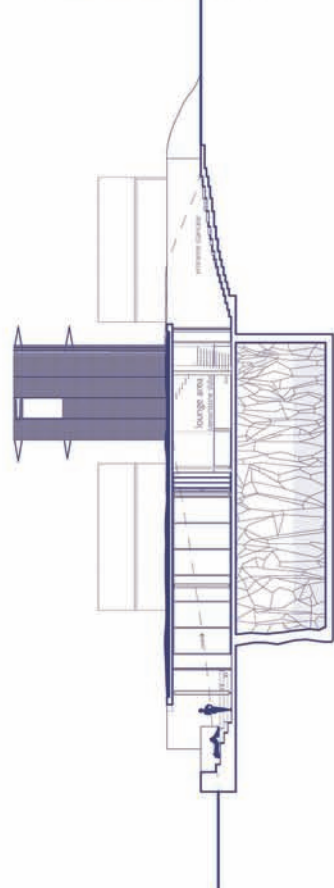
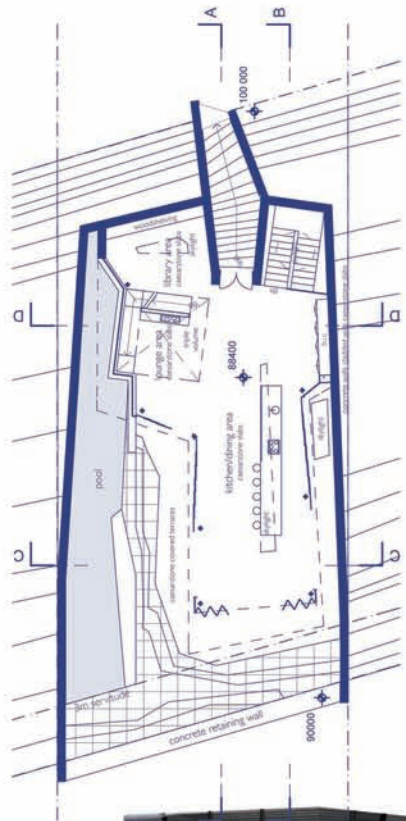
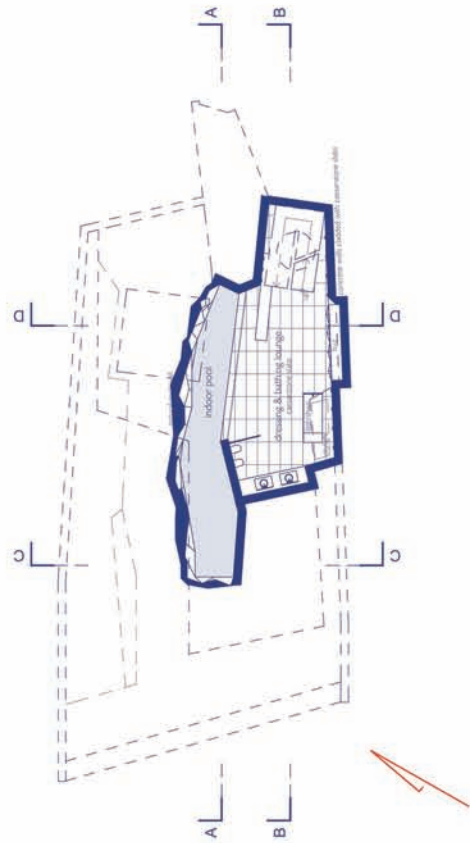
view from the street (entrance)

SCALE 1:200

BASEMENT LEVEL

GROUND FLOOR

SECTION A



The concept of the house is: 'a slice into the earth', with a sleek, strong geometric form protruding through the ground with force and importance. One approaches the house on street level, and descends into the earth along 2 heavy, jet-in-situ concrete walls. This descent is symbolic of Siegfried's love of the earth and what lies beneath it. A tunnel is physically brought into the realm of the geologist.

As one enters the space the expectation is to walk into a space resembling a bunker, dark, restricted light and surrounded by walls and earth. Once in the house the living space opens out beyond its imposed boundaries. Air, light and space flow freely through the house in both X,Y and Z axis. The simple structure and ample glazing allow light to flow unobstructed.

The house becomes part of the earth, in harmony with its environment. The site and natural vegetation remain the dominant element, but it's importance is emphasized as it also becomes the transition and threshold between urbanite and earth addict.

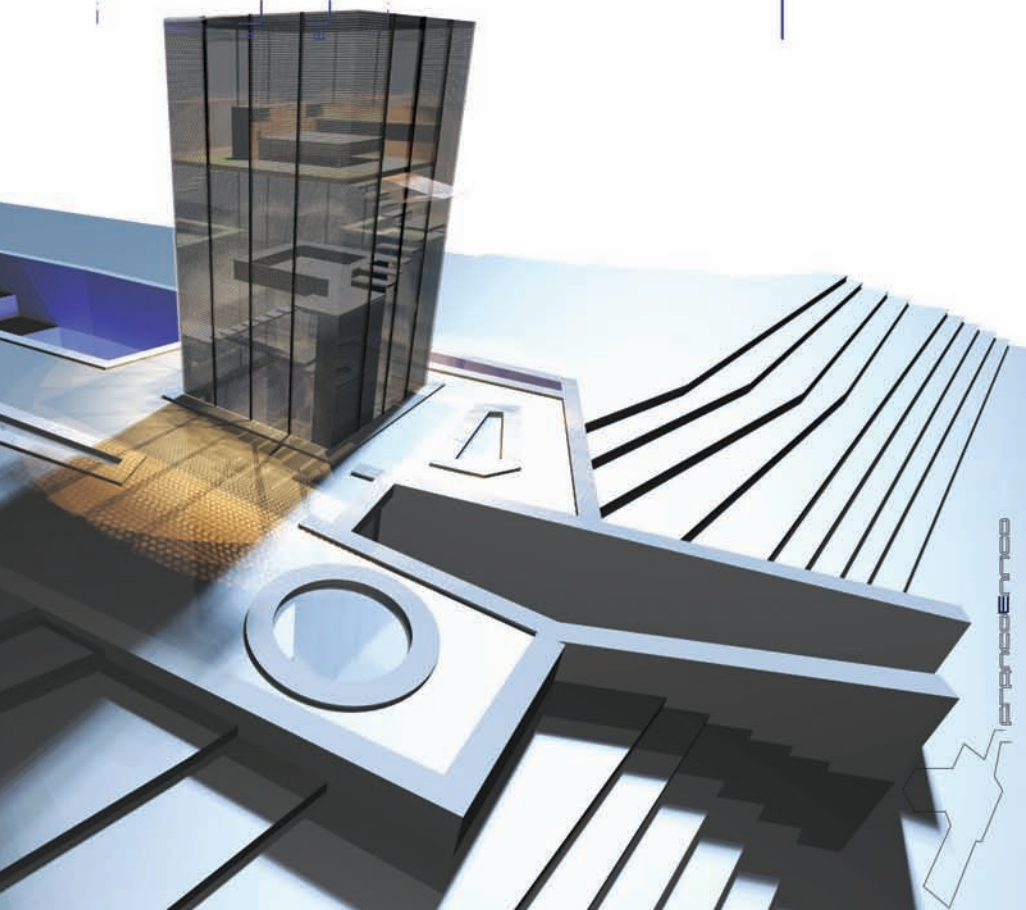
Siegfried's worlds of stoner/rock and urban-euro-slick are forged into one seamless design.

The natural ground line acts as the spiritual link between Siegfried's two loves. Internally the transition between Earth addict and slick contemporary urbanity, is exemplified through the cave like bathroom suite to the contrasting mesian glass tower.

The tower acts as a light funnel in the day, causing the house to be filled with natural light as if it sits on-top of the earth and not buried within it. At night the process is reversed and the tower becomes a beacon. Filled with light from within, celebrating its own existence.

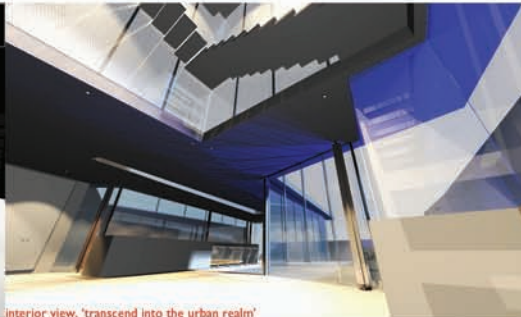
The Bathroom suite is a solemn and calm escape from the stressed and exited world of today. In this space Siegfried is brought into the realm of geologists with the space being below ground. The natural rock is cut and revealed as structural, it becomes a natural contrast to the smooth and uniform nature of the ceasarstone wall cladding. The Indoor pool is dug out and cut from the natural rock of the site and becomes a man made in-door rock pool.

The pool creates serenity in the space, with the water acting as a calming element. The design is a world of contrast echoing the lifestyle and needs of the client, brought together with simple line, proportions and an emphasise on the unobstructed flow of energy.





interior view, kitchen, lounge & library



interior view, 'transcend into the urban realm'



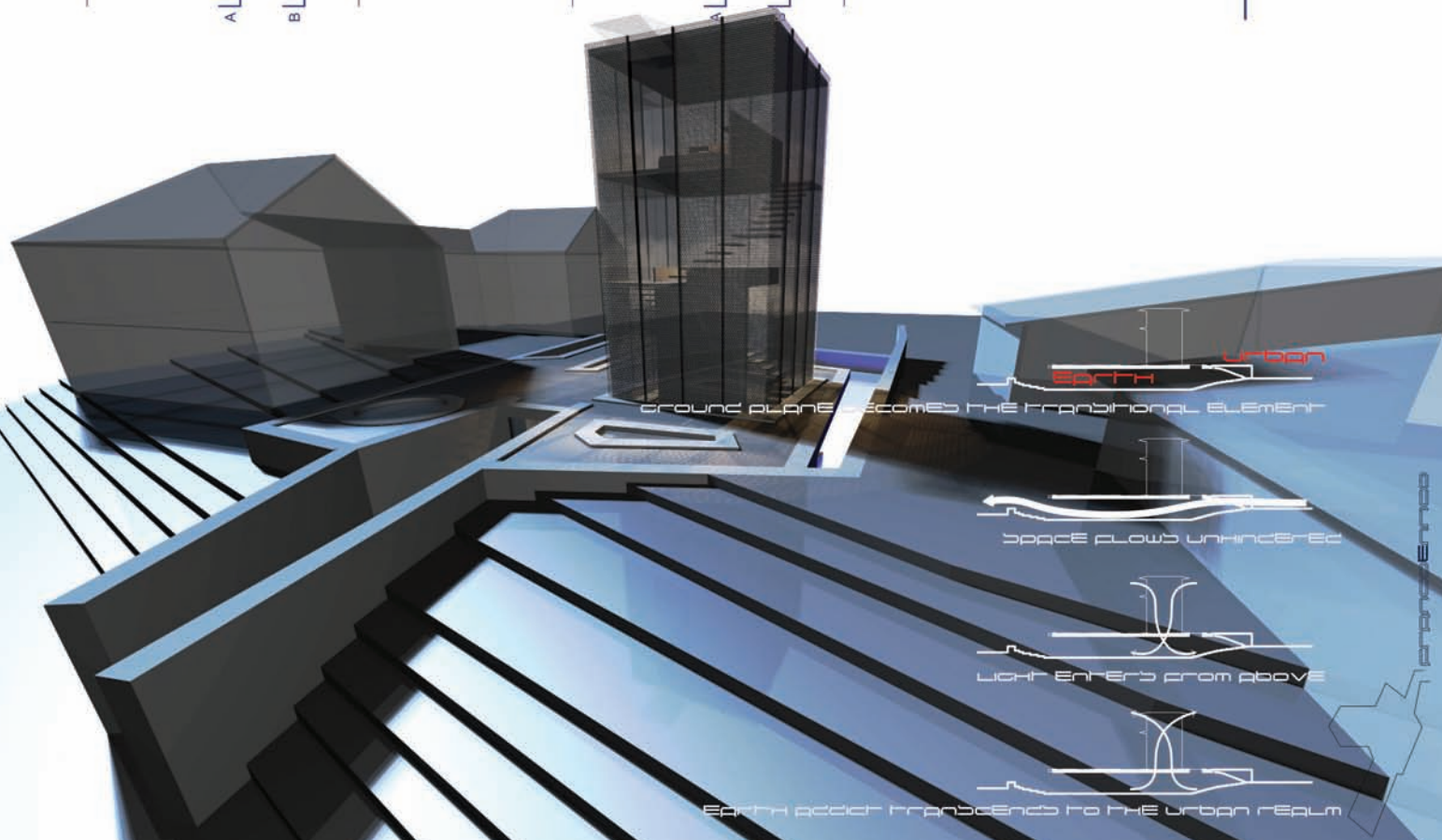
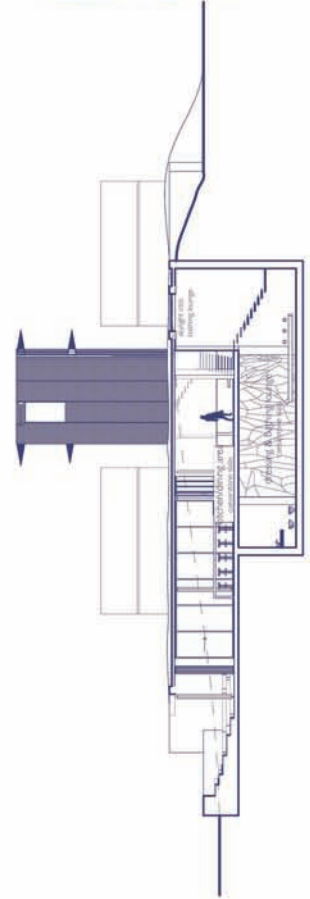
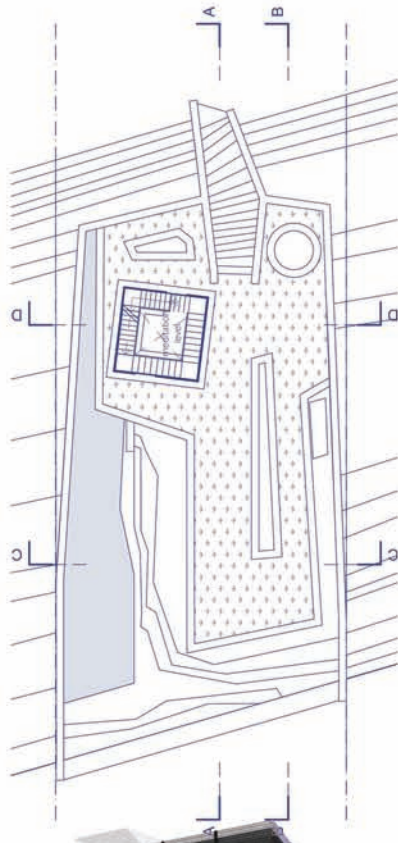
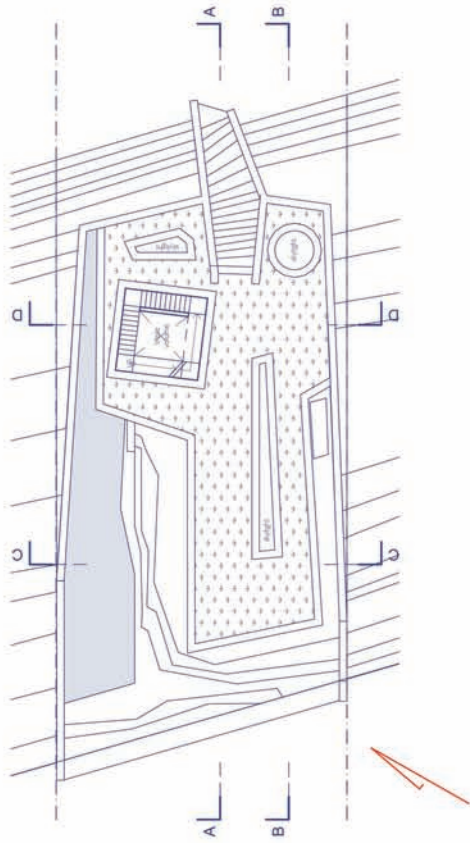
interior view of the kitchen

SCALE 1:200

FIRST FLOOR

SECOND LEVEL

SECTION B



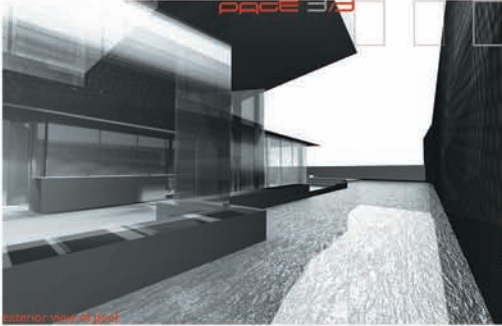
GROUND PLANE BECOMES THE TRADITIONAL ELEMENT

SPACE FLOWS UNHINDERED

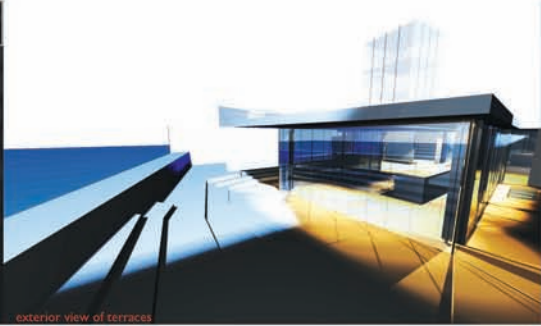
LIGHT ENTERS FROM ABOVE

EARTH DOESN'T TRANSCEND TO THE URBAN REALM

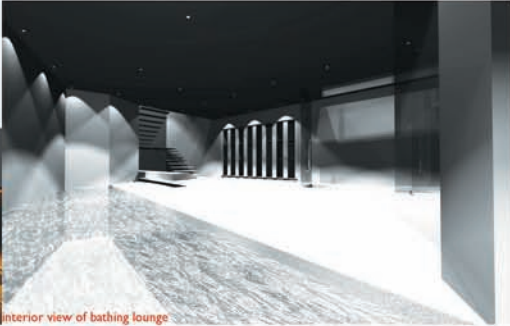
CONCEPT



exterior view of pool



exterior view of terraces



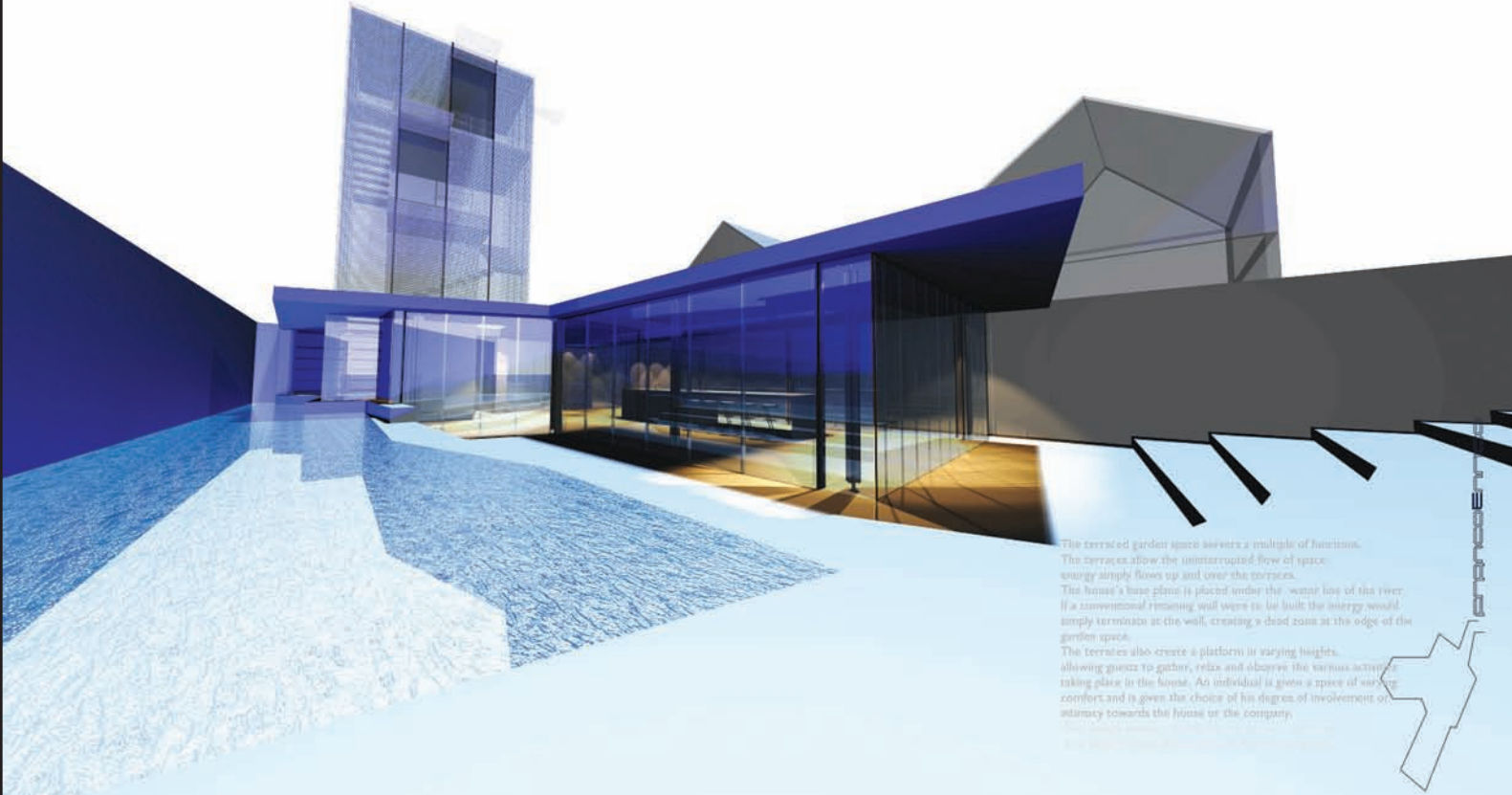
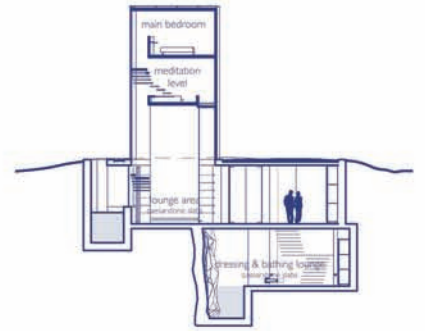
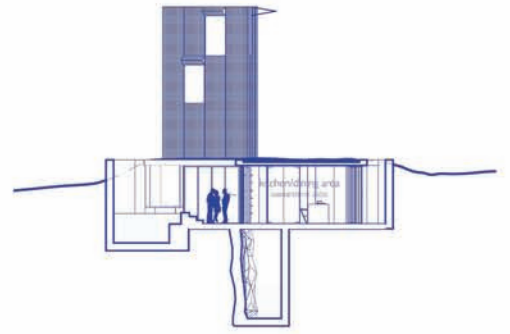
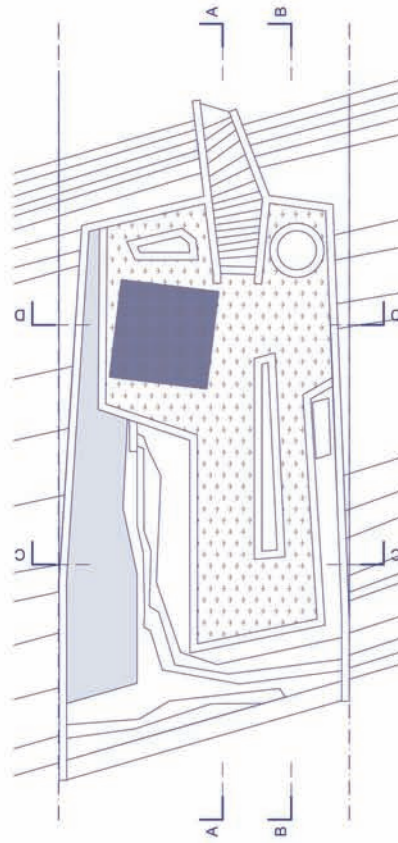
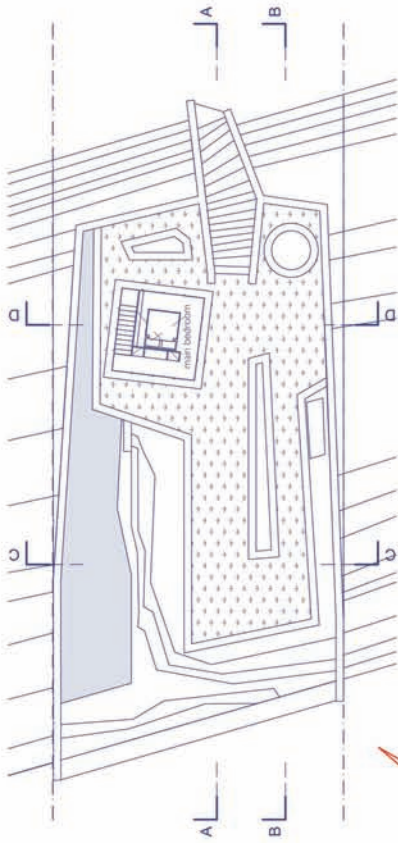
interior view of bathing lounge

SCALE 1:100

THIRD LEVEL

ROOF PLAN

SECTION E + E



The terraced garden space allows a multiple of functions. The terraces allow the uninterrupted flow of space; energy simply flows up and over the terraces. The house's base plane is placed under the water line of the river. If a conventional retaining wall were to be built the energy would simply terminate at the wall, creating a dead zone at the edge of the garden space. The terraces also create a platform at varying heights, allowing guests to gather, relax and observe the various activities taking place in the house. An individual is given a space of comfort and is given the choice of his degree of involvement or intimacy towards the house or the company.